

# the PROMISE —RESOURCE CENTER—

*help a child tomorrow with what you learn today*



## August & September Newsletter

### Signing Up for Classes

Here at PRC, we have a passion for education and are excited to have you join us in the pursuit of knowledge!

To register for a class, simply visit our website at [www.thepromisecenter.org/register](http://www.thepromisecenter.org/register) or call us at 301-290-0040. You can pay via credit card on the website or over the phone, or via check, cash or money order. Please note that classes must be paid for in advance, so please pay promptly to secure your spot.

### Resource Store

Our Resource Store has multiple tools and supplies available for your art and scholastic needs. Come by the center and take advantage of our equipment and supplies at little or no cost.

Black and White Copies: \$.10/Page	Laminating: \$1.50/Per Foot
Colored Paper Copies: \$.20/Page	Book Binding: \$2.50/Per Book
Card Stock Copies: \$.25/Page	Board Maker: \$.50/Page
Construction Paper: \$2.00/Pack, \$.05/Per Sheet	
Die Cut: FREE	

### Cancellation Policy

We do not issue refunds if a student cancels their enrollment in a class. If you need to cancel, you must call the Promise Resource Center 24-hours in advance and we will gladly give you a credit for another class.

\*Cancellations must be made 48 hours in advance for CPR and First Aid and Medication Administration or your payment will be forfeited and no credits will be issued.

#### Stay in the know!

Visit our website to join our mailing list, and you'll receive our bi-monthly e-newsletter, behavior management tips, child care information, updates on local events, and so much more!

[www.thepromisecenter.org](http://www.thepromisecenter.org)

Questions? Email us!  
[info@thepromisecenter.org](mailto:info@thepromisecenter.org)

#### It Pays to be a Member!

Become a member of the Promise Resource Center for only \$10 a year to save on certain classes, receive coupons and discounts to our Resource Store! To sign up, call us at 301-290-0040.

Be sure to "like" our page on Facebook to receive updates and fun ideas from The



Find us on  
**Facebook**

Promise Resource Center!

# News From The Promise Resource Center

## FEATURED THIS MONTH

### Providing a Print Rich Environment



**Date: Friday, 8/17**

*Time: 1:00pm-3:00pm, COK: 2 hours of curriculum*

*Fee: \$25 for members or \$30 for non-members*

The literacy-rich environment emphasizes the importance of speaking, reading, and writing in the learning of all students. This involves the selection of materials that will facilitate language and literacy opportunities; reflection and thought regarding classroom design; and intentional instruction and facilitation by teachers and staff.

**Register by calling 301-290-0040 or visit [thepromisecenter.org/register!](http://thepromisecenter.org/register!)**

## PAU Opportunity!

The Promise Resource Center is looking for volunteers to help with our 3rd Annual Drive-In Event!



Date: Saturday, August 25, 2018

Volunteer Time: 3:00pm - 8:15pm

**Volunteers will receive 1 PAU, a free parking pass, and 1 general admission for the event!**

\*Must purchase general admission tickets for additional guests.

**SIGN UP NOW!**

Visit [www.thepromisecenter.org/volunteer](http://www.thepromisecenter.org/volunteer)  
Call 301-290-0040

Email [info@thepromisecenter.org](mailto:info@thepromisecenter.org)  
29958 Killpeck Creek Court, Charlotte Hall, MD



## Inclement Weather Policy

The Promise Resource Center follows St. Mary's County Public School's inclement weather cancellation schedule. If schools are closed or after-school activities are cancelled due to inclement weather, our office will be closed and the class for that day will be cancelled. For current cancellations, please call 301-290-0040.





JOIN THE PROMISE  
RESOURCE CENTER FOR  
OUR 3RD ANNUAL  
DRIVE-IN MOVIE EVENT  
ON

**AUGUST 25, 2018!**

featuring

**DESPICABLE  
ME 3**



- DRIVE-IN PARKING
- CONCESSIONS
- VENDORS
- BOUNCE HOUSES
- MUSIC & MORE!

**@ ST. MARY'S COUNTY FAIRGROUNDS**

**Gates open @ 5:30PM**

**Movie starts @ 8:15PM**

**General Admission:**  
\$10 per person online,  
\$15 per person at the  
door

**Parking:**  
\$5 per vehicle  
limited number  
available!

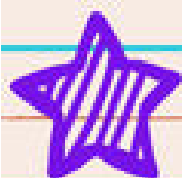
**Ticket sales benefit The Promise Resource  
Center, a nonprofit organization focused  
on educating parents and strengthening  
local families!**

**MEET & GREET THE MINIONS!**

**TICKETS ON SALE JUNE 1!**

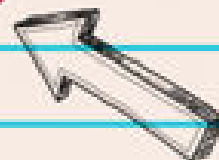
**[WWW.THEPROMISECENTER.ORG/DRIVEIN](http://WWW.THEPROMISECENTER.ORG/DRIVEIN)**

# GET READY FOR SCHOOL AT PRC'S PROVIDER RESOURCE NIGHT!



## TUESDAY, AUGUST 28

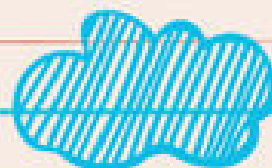
### 6:00pm-8:00pm



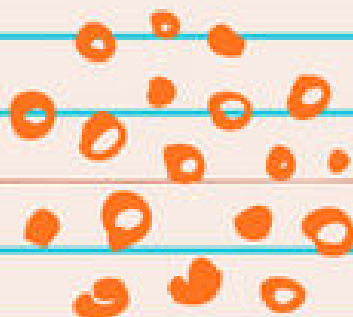
Use our resource area to prep your  
classroom decorations, die-cut shapes for  
activities and games, and get last minute  
ideas to add to your curriculum!

### MAKE USE OF:

- 500 DIE-CUT SHAPES
- BOOK BINDERS
- LAMINATING MACHINE
- BOARDMAKER
- COPY MACHINE
- & MORE!



Bring your own  
paper &  
materials or  
purchase it here!  
**\*CASH OR  
CHECK ONLY\***



## CALL 301-290-0040 TO SIGN UP!

The Promise Resource Center is a member agency of the Maryland Childcare Resource Network with funding provided by



Maryland Family Network.

MARYLAND  
FAMILY  
NETWORK







# BOGO

## IS BACK!

### THIS SUMMER ONLY AT PRC!

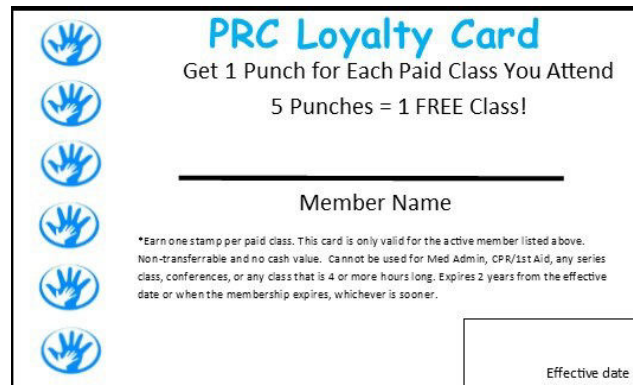
**BOGO: Buy one, get one class free with each paid registration\* in June, July and August!**

\*BOGO deal can only be used with paid registrations for 2-hour Core of Knowledge courses. Maryland EXCELS courses are not eligible for this promotion. Loyalty card holders will receive a hole punch for each paid class. Free class must be taken by August 31, 2018. No cash value or refunds for cancellations.

**Check out our summer calendar for eligible classes!**

**CALL 301-290-0040 TO REGISTER!**

# PROMISE



## DON'T FORGET TO TAKE ADVANTAGE OF OUR LOYALTY CARD PROGRAM!

Don't think you'll make it to 5 classes this year? That's okay, loyalty cards are valid for 2 years from the date of membership!

Through this program, members will earn **one free class after attending 5 paid classes.** In addition, members will continue to receive special prices, coupons and discounts to trainings and our Resource Store!

## Become a Member!

### Membership Application

Please send application form with check or money order to:

***The Promise Resource Center  
29958 Killpeck Creek Court  
Charlotte Hall, MD 20622***

Name \_\_\_\_\_

Address \_\_\_\_\_

City \_\_\_\_\_ State \_\_\_\_\_ Zip \_\_\_\_\_

Home Phone \_\_\_\_\_

Email address \_\_\_\_\_

Membership: \_\_\_\_\_ Renewal \_\_\_\_\_ New

\_\_\_\_\_ \$10 Licensed Provider/Potential Provider/Other

\_\_\_\_\_ \$25 Group/Center/Director

# PROMISE

## Did You Know We Can Bring Our Trainings To Your Center?

**We offer many of our trainings on-site for as few as 6 people!**

### **Cost:**

**2 Hour Training:  
\$30 per person**

**3 Hour Training:  
\$40 per person**

**Specialty Training  
prices vary.**

**View our training calendar on our website to see some of our main class offerings, or call us for a training tailored specifically to your needs!**

For more information, or to schedule an on-site for your location, contact PRC at (301) 290-0040 or email [register@thepromisecenter.org](mailto:register@thepromisecenter.org)

### **Extended Hours**

Do you want to reserve our training room for a meeting or workshop!? How about use our die cuts & laminator after work? Remember we will be open for extended hours by appointment only and with advanced notice. All you need to do is call 301-290-0040 to schedule the date and time you want.

*Our regular business hours are  
Monday-Friday from 8:30am-5:00pm*

### **Complaint Policy Pertaining to CCRR Service**

All of the resource centers of the Maryland Child Care Resource Network strive to provide high-quality service to their constituencies. However, in the event that someone has concerns about an incident regarding some aspect of service at a regional child care resource center or feels that he or she was mistreated by a staff member of a resource center, the caller can contact the resource center involved. If the person is not satisfied with the way the concern or complaint was handled by the regional resource center, he or she can contact the network manager at the Maryland Family Network at 410-752-7588.

# PROMISE

Be sure to look for the New Trainings being offered this month!

## Registration Policy

- **Payment and registration form must be received at the time of registration.** To register for a class: mail check or money order to the Resource Center, drop off payment or call our office to pay with credit card by phone during our regular business hours, Monday-Friday, 8:30am-5:00pm.
- Online registration at our website: [www.thepromisecenter.org](http://www.thepromisecenter.org)
- No Walk-ins permitted. No money will be accepted at the door.
- Due to space limitations, liability issues and the need for a learning environment, **children are not allowed** to attend any workshops. Please make child care arrangements in advance.
- Confirmations will not be mailed. You may call 301-290-0040 to verify your enrollment in the class.
- There is a \$40 service charge for returned checks.
- You must be present and participate in the entire class to receive a certificate for the clock hours listed. **Classes begin at the stated time and no admittance is permitted 15 minutes after the class has started. Late arrivals will not receive certificates, refunds, or transfers for the class.**
- If you have lost or misplaced a certificate, there is a \$5.00 replacement fee.
- Please call 301-290-0040 in advance of class if you need assistance or require special accommodations.
- All classes are open to the public.

## Cancellation Policy

- We do not issue refunds if a student cancels their enrollment in a class. If you need to cancel, **you must call the Promise Resource Center 24-hours in advance** and we will gladly give you a credit for another class. **\* Cancellations must be made 48 hours in advance for CPR and First Aid and Medication Administration** or your payment will be forfeited and no credits will be issued.
- Credit for cancelled classes must be used to attend another class within 60 days of the cancellation or it is forfeited.
- Promise Resource Center reserves the right to cancel a class if, the day prior to the class, we don't have the necessary number of paid participants. You will receive a call notifying you of the cancellation and your money will be refunded or a credit will be issued. Credit must be used to attend another class within 60 days of the cancellation or it is forfeited.
- **Promise Resource Center follows St. Mary's County Public School's inclement weather cancellation schedule. If schools are closed or after-school activities are cancelled due to inclement weather, our office will be closed and the class for that day will be cancelled. For current cancellations, please call 301-290-0040.**

The Promise Resource  
Center

29958 Killpeck Creek Ct.  
Charlotte Hall, MD 20622

(301) 290-0040 or

(866) 290-0040

Visit us on the web at  
[www.thepromisecenter.org](http://www.thepromisecenter.org)

## To register for a class:

- ♦ Mail registration form, check, money order, or credit card information to the Promise Center
- ♦ Drop off payment during our regular business hours, Monday-Thursday, 8:30 am-5:00 pm
- ♦ Call our office to pay with a credit card by phone
- ♦ Visit our website and register online with a credit card

*The Promise Resource Center  
provides*

*low-cost workshops for child  
care providers,  
parents and the  
community. Our evening and  
Saturday workshops meet  
MSDE/Office of Child Care  
requirements for Core of  
Knowledge training.*



# LOCATE: Child Care

If you are a licensed child care program or family child care provider, you can take advantage of this free method of advertising by keeping your LOCATE database record current.

- ♦ Report changes to your fees, email, hours, and etc.;
- ♦ Report vacancies.
- ♦ Request a database questionnaire;
- ♦ Leave a question and someone will call you back.

Call toll free **1-866-752-1614** – provider message service.

## LOCATE Complaint Policy

Through the LOCATE service, parents share feedback with the LOCATE staff on the programs in the files: licensed child care centers, registered family child care providers and accredited preschools and camps. While this feedback is at times positive, it sometimes concerns complaints parents have about child caregivers. Of course, LOCATE and the Maryland Child Care Resource Network want to use this information in a way that is fair to providers and parents, while protecting children, as well.

Therefore, the LOCATE Complaint Policy was developed and has been in effect since its approval by the Maryland Committee for Children Board in November, 1983. According to this policy, all complaints made to LOCATE about child care providers/facilities are recorded. The type of complaint is then determined:

**Less Serious Complaint - No Violation:** complaints which do not involve violations of child care regulations; complaints about situations which do not pose a threat to the safety, health or welfare of a child.

**Less Serious Complaint Involving Violation:** complaints of any violation of Office of Child Care (OCC), Maryland State Department of Education (MSDE) regulations, and/or the Health Department which do not pose a threat to the health, safety or welfare of a child.

**Serious Complaint:** any threat to the immediate health, safety, or welfare of a child.

When a parent calls LOCATE with a complaint, the referral specialist advises him/her to register the complaint directly with the appropriate regulatory agency and/or Protective Services. Names and telephone numbers of the person with whom the parent should speak are provided.

When a Serious Complaint is received concerning one of the providers of facilities in the LOCATE system, no referrals are made by the referral specialists to that provider/facility. The LOCATE Director also communicates with the appropriate regulatory agency personnel about the complaint, and maintains the "hold" on the provider/facility until the agency's disposition of the complaint is known. Should the investigation result in no action, the "hold" status is removed from that provider's/facility's records. Should the license or registration be revoked, the record is removed from the LOCATE files. Providers are advised of LOCATE's actions in writing.

A provider may appeal the LOCATE Director's decision to cease referrals. Appeals are first addressed to the LOCATE Advisory Committee. Final appeals may be made to the board of the Maryland Family Network.

It is the position of LOCATE and MFN that the Complaint Policy is both fair and workable. Safeguards and due process are afforded to the care givers in the files, and parents' and children's rights to safety are addressed, as well. Any questions on this policy should be addressed to FloJean Speck, LOCATE: Child Care Director.



**MARYLAND  
FAMILY  
NETWORK**

*Leading Maryland's  
Child Care Resource Centers*



**This publication was produced as a work for hire for the benefit of and with funds from the Maryland State Department of Education.**

**The Promise Resource Center is a member agency of the Maryland Childcare Resource Network with funding provided by Maryland Family Network.**

# AUGUST 2018

Sunday	Monday	Tuesday	Wednesday	Thursday	Friday	Saturday
			1 Girls Vs. Boys 6:30pm-8:30pm Instructor: Ashley Beisel  *BOGO ELIGIBLE!*	2	3	4
5	6 All Children Are Gifted 6:30pm-8:30pm Instructor: Beth Hancock  *BOGO ELIGIBLE!*	7	8 What Does Developmentally Appropriate Practice Mean? 6:30pm-8:30pm Instructor: Lindsay Edwards  *BOGO ELIGIBLE!*	9	10	11
12	13	14 What Parents Really Want to Know 6:30pm-8:30pm Instructor: Ashley Beisel  *BOGO ELIGIBLE!*	15	16 Including All Children and the Americans with Disabilities Act 6:00pm-9:00pm Instructor: Julie Lowthert	17 Providing a Print Rich Environment 1:00pm-3:00pm Instructor: Emily Tex  *BOGO ELIGIBLE!*	18
19	20	21 Singing, Dancing, and Moving to the Groove for Infants and Toddlers 6:30pm-8:30pm Instructor: Patricia Carruth  *BOGO ELIGIBLE!*	22	23	24	25 CPR & First Aid 9:00am-1:00pm Instructor: Jay Hyde
26	27	28	29 Basic Health & Safety Training 6:00pm-9:00pm	30	31	

# AUGUST 2018

## Training Descriptions:

### 8/1—Girls Vs. Boys

Girls Vs. Boys is a presentation and hands-on style training about the physical, cognitive and social differences between school aged boys and girls.

*Time: 6:30pm-8:30pm, COK: 2 hours of child development*

*Fee: \$25 for members or \$30 for non-members*

**\*BOGO ELIGIBLE!\***

### 8/6—All Children Are Gifted

Find the different gifts and different strengths within each child you care for! We will discuss recognizing what is developmentally appropriate, gifts, and special needs.

*Time: 6:30pm-8:30pm, COK: 2 hours of special needs*

*Fee: \$25 for members or \$30 for non-members*

**\*BOGO ELIGIBLE!\***

### 8/8—What Does Developmentally Appropriate Mean?

Come explore what "Developmentally Appropriate" really means and how you can implement standards into your child care program.

*Time: 6:30pm-8:30pm, COK: 2 hours of curriculum*

*Fee: \$25 for members or \$30 for non-members*

**\*BOGO ELIGIBLE!\***

### 8/14—What Parents Really Want to Know

Communicating with parents is challenging. Discussion in this class will include effective communication strategies for building positive relationships.

*Time: 6:30pm-8:30pm, COK: 2 hours of community*

*Fee: \$25 for members or \$30 for non-members*

**\*BOGO ELIGIBLE!\***

### 8/16—Including All Children and The Americans with Disabilities Act—OCC Requirement

This training will go over the requirements of the ADA, inclusionary practices in early childhood and school age programs. Also, learn about local, state, and national resources available to child care providers.

*Time: 6:00pm-9:00pm, COK: 3 hours of special needs*

*Fee: \$30 for members or \$35 for non-members*

### 8/17—Providing a Print Rich Environment

Participants will be introduced to the reading and writing connection and stages of emergent writing.

*Time: 1:00pm-3:00pm, COK: 2 hours of curriculum*

*Fee: \$25 for members or \$30 for non-members*

**\*BOGO ELIGIBLE!\***

### 8/21—Singing, Dancing and Moving to the Groove for Infants and Toddlers

Young children learn to sing just as they learn to speak and move-through imitation, exploration, and repetition. In this workshop, we will discuss motor and music development and experience strategies they can use to promote learning in these areas.

*Time: 6:30pm-8:30pm, COK: 1 hour of child development and 1 hour of curriculum*

*Fee: \$25 for members or \$30 for non-members*

**\*BOGO ELIGIBLE!\***

### 8/25—CPR & First Aid—OCC Requirement

Participants will be trained in CPR for the infant, child and adult. This class meets the Maryland Child Care Administration's requirements for child care facilities.

*Time: 9:00am-1:00pm*

*Fee: \$75 for members and non-members*

### 8/29—Basic Health & Safety Training—OCC Requirement

This workshop will satisfy the pending regulation requiring all child care providers, including all center staff and family providers, to complete this workshop. This workshop was developed in partnership with the National Center for Early Childhood Health and Wellness, Child Care Aware of America, the American Academy of Pediatrics, and Maryland Family Network, with support from the Maryland State Child Care Association.

*Time: 6:00pm-9:00pm, COK: 3 hours of health, safety, and nutrition*

*Fee: \$30 for members or \$35 for non-members*

**BOGO: Buy one, get one class free with each paid registration\* in June, July and August!**

*\*BOGO deal can only be used with paid registrations for 2-hour Core of Knowledge courses. Maryland EXCELS courses are not eligible for this promotion. Loyalty card holders will receive a hole punch for each paid class. Free class must be taken by August 31, 2018. No cash value or refunds for cancellations.*

## **Membership:**

*Interested in becoming a member of The Promise Resource Center and receiving discounts on many of the classes you see here?*

*For only \$10 a year, individual membership will earn you :*

- 1 PAU
- \$5 off select trainings
- 1 free training for every 5 trainings completed
- Satisfaction in knowing you are helping families in our community receive services for low or no cost!

*Visit [thepromisecenter.org/register](http://thepromisecenter.org/register) or call 301-290-0040 to register for membership today!*



# SEPTEMBER 2018

Sunday	Monday	Tuesday	Wednesday	Thursday	Friday	Saturday
						1
2	3	4	5	6	7	8 Positive Child Guidance and Effective Interactions 9:00am-12:00pm Instructor: Emily Tex
9	10	11 Understanding Autism Spectrum Disorder in the Preschool Program 6:00pm-9:00pm Instructor: Ashley Beisel	12	13 Developmentally Appropriate Practices for Infants and Toddlers 6:00pm-9:00pm Instructor: Diane Stearns	14	15
16	17 The Childcare Provider as a Professional 6:00pm-9:00pm Instructor: Patricia Carruth	18	19	20	21	22 CPR & First Aid 9:00am-1:00pm Instructor: Jay Hyde
23	24 An Introduction to ASQ 3 and ASQ Online 5:00pm-8:00pm Instructor: Sarah Sutherland	25	26 Hands-on Art for Twos 6:00pm-9:00pm Instructor: Lindsay Edwards	27	28	29 Medication Administration 9:00am-4:00pm Instructor: Pat Jennings

# SEPTEMBER 2018

## Training Descriptions:

### 9/8—Positive Child Guidance and Effective Interactions

Research continues to support the importance of building a foundation of social and emotional wellness for all children in order to grow up into healthy happy adults. Positive child guidance and discipline is one piece of the puzzle that supports a child's wellbeing in preparation for learning and life. This workshop will address both the definitions, strategies and best practices for positive guidance and discipline for all children.

*Time: 9:00am-12:00pm, COK: 3 hours of child development*

*Fee: \$30 for members or \$35 for non-members*

### 9/11—Understanding Autism Spectrum Disorder in the Preschool Program

This class will provide a basic understanding of Autism, including the effects on physical, social and behavioral development. Step into the world of autism by experiencing sensory stimulation techniques.

*Time: 6:00pm-9:00pm, COK: 3 hours of special needs*

*Fee: \$30 for members or \$35 for non-members*

### 9/13—Developmentally Appropriate Practices for Infants and Toddlers

Developmentally appropriate practice (DAP) should occur in every program for every age child. Participants will define DAP and discover exactly what a DAP environment looks like as well as what activities to include every day.

*Time: 6:00pm-9:00pm, COK: 2 hours of curriculum and 1 hour of child development*

*Fee: \$30 for members or \$35 for non-members*

### 9/17—The Child Care Provider as a Professional

Gain a greater understanding of child care initiatives, resources, and professional organizations which can assist you in your business. Discuss what it means to be a professional in child care. Plus, examine the NAEYC child care code of ethics and discuss how it can assist you with your program.

*Time: 6:00pm-9:00pm, COK: 3 hours of professionalism*

*Fee: \$30 for members or \$35 for non-members*

### 9/22—CPR & First Aid—OCC Requirement

Participants will be trained in CPR for the infant, child and adult. This class meets the Maryland Child Care Administration's requirements for child care facilities.

*Time: 9:00am-1:00pm*

*Fee: \$75 for members and non-members*

### 9/24—An Introduction to ASQ-3 and ASQ Online

Participants will learn about the features of the ASQ-3 and ASQ Online, including administration, scoring, referrals, and communicating results with families. Participants will identify the differences between assessments and screening tools.

*Time: 5:00pm-8:00pm, COK: 1.5 hours of child development and 1.5 hours of community*

*Fee: \$30 for members or \$35 for non-members*

### 9/26—Hands-on Art for Twos

Art exploration with open ended materials provides countless opportunities for children to develop fine motor skills, social emotional skills, emerging perceptual-motor skills as well as pre-reading and writing skills. This workshop explores a variety of open ended art experiences which are age and developmentally appropriate for the young child.

*Time: 6:00pm-9:00pm, COK: 3 hours of curriculum*

*Fee: \$30 for members or \$35 for non-members*

### 9/29—Medication Administration—OCC Requirement

This training course is a 6-hour competency-based class approved by MSDE/OCC to train child care providers to safely administer oral, topical and emergency medication to children in a child care setting. Upon successful completion of this course each participant will receive a certificate of completion which will allow the participant to administer MSDE/OCC approved medications to infants, toddlers, preschool and school aged children in child care centers and homes. You must pass a pre and post test. You may bring lunch or go to a fast-food restaurant in the area.

*Time: 9:00am-4:00pm, COK: 6 hours of health, safety, and nutrition*

*Fee: \$65 for members and non-members*

## Membership:

*Interested in becoming a member of The Promise Resource Center and receiving discounts on many of the classes you see here?*

*For only \$10 a year, individual membership will earn you :*

- 1 PAU
- \$5 off select trainings
- 1 free training for every 5 trainings completed
- Satisfaction in knowing you are helping families in our community receive services for low or no cost!

*Visit [thepromisecenter.org/register](http://thepromisecenter.org/register) or call 301-290-0040 to register for membership today!*