

# April & May Newsletter



## Signing Up for Classes

Here at PRC, we have a passion for education and are excited to have you join us in the pursuit of knowledge!

To register for a class, simply visit our website at [www.thepromisecenter.org/register](http://www.thepromisecenter.org/register) or call us at 301-290-0040. You can pay via credit card on the website or over the phone, or via check, cash or money order. Please note that classes must be paid for in advance, so please pay promptly to secure your spot.

## Resource Store

Our Resource Store has multiple tools and supplies available for your art and scholastic needs. Come by the center and take advantage of our equipment and supplies at little or no cost.

Black and White Copies: \$.10/Page      Laminating: \$1.50/Per Foot  
Colored Paper Copies: \$.20/Page      Book Binding: \$2.50/Per Book  
Card Stock Copies: \$.25/Page      Board Maker: \$.50/Page  
Construction Paper: \$2.00/Pack, \$.05/Per Sheet  
Die Cut: FREE

## Cancellation Policy

We do not issue refunds if a student cancels their enrollment in a class. If you need to cancel, you must call the Promise Resource Center 24-hours in advance and we will gladly give you a credit for another class.

\*Cancellations must be made 48 hours in advance for CPR and First Aid and Medication Administration or your payment will be forfeited and no credits will be issued.

### Stay in the know!

Visit our website to join our mailing list, and you'll receive our bi-monthly e-newsletter, behavior management tips, child care information, updates on local events, and so much more!

[www.thepromisecenter.org](http://www.thepromisecenter.org)

Questions? Email us!  
[info@thepromisecenter.org](mailto:info@thepromisecenter.org)

### It Pays to be a Member!

Become a member of the Promise Resource Center for only \$10 a year to save on certain classes, receive coupons and discounts to our Resource Store! To sign up, call us at 301-290-0040.

Be sure to "like" our page on Facebook to receive updates and fun ideas from The

 Find us on  
**Facebook**



# News From The Promise Resource Center

## Special Showings at R/C Theatre

Lights are left on!

February dates are:

Only \$6.50 per person on  
Tuesdays!

Tuesday, April 17

Sound is turned down!

Saturday, April 21

\$8.00 per person on  
Saturdays!

at 10:00am featuring 'Sherlock Gnomes'

Bring snacks & drinks!



Judgement-free zone!

The little ones can  
dance along!

Move around, talk, and  
laugh—don't worry about  
disturbing others!

This is a great activity  
for centers and family  
providers!

## FEATURED THIS MONTH

### 4/25– Science, Technology, Engineering and Math (STEM) in the Early Childhood Program: Infuse STEM Into Your Program

*Time: 6:30pm-8:30pm, COK: 2 hours of  
curriculum*

*Fee: \$25 for members or \$30 for non-members*

**Participants will learn how to support STEM  
learning by creating environments that  
provide opportunities to explore, create, and  
question during play.**

Register by calling 301-290-0040 or visit



## Inclement Weather Policy

The Promise Resource Center follows St. Mary's County Public School's inclement weather cancellation schedule. If schools are closed or after-school activities are cancelled due to inclement weather, our office will be closed and the class for that day will be cancelled. For current cancellations, please call 301-290-0040.

THE PROMISE RESOURCE CENTER'S 2018 SPRING CONFERENCE

# *Take a Hand, Touch a Heart*

JUNE 2, 2018

9:00AM-4:45PM

LEXINGTON PARK LIBRARY

CONFERENCE ROOMS A&B

\$50 for members  
&  
\$55 for non-members

\*Find out how you can  
save 18% by calling  
301-290-0040!\*

Register now for our spring conference! We will discuss the importance of understanding how to identify children who have experienced traumatic events and the work being done in Maryland to provide more resources to children and families who may have experienced trauma.

*Earn 4 hours Child  
Development, 1 hour  
Special Needs, 1  
Hour Community  
and 1 PAU!*

Featuring Keynote Speakers Margo Candelaria and Kate Wasserman,  
Co-Directors of the Parent, Infant, Early Childhood Program!

## *Featured Trainings:*

**SHOW ME WHAT TO DO: CLASSROOM STRATEGIES THAT  
BENEFIT ALL CHILDREN**

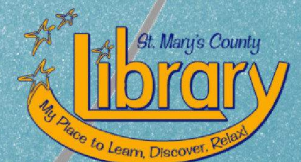
Presented by: Erica Love & Michelle Northam

&

**CONNECTING WITH CHILDREN AND FAMILIES IMPACTED  
BY TRAUMA**

Presented by: Ashley Beisel

TO REGISTER, CALL 301-290-0040 OR VISIT  
[THEPROMISECENTER.ORG/REGISTER!](http://THEPROMISECENTER.ORG/REGISTER!)



PRC's Spring Conference 2018

*Take a Hand, Touch a Heart*

*Spring of*  
**'18**  
*Special*

**REGISTER FOR 2 COK TRAININGS\* IN MARCH,  
APRIL, OR MAY AND RECEIVE**

**18% OFF**

**YOUR SPRING CONFERENCE REGISTRATION!**

\*18% off discount must be used at the time of registration for the conference. Both classes must be completed by May 31. Does not include series trainings, CPR & First Aid, Medication Administration, Basic Health & Safety, Breastfeeding, SIDS, or ADA. The discount cannot be transferred. No cash value. Conference space is limited and cannot be guaranteed.\*

[www.thepromisecenter.org/register](http://www.thepromisecenter.org/register)

the **PROMISE**  
—RESOURCE CENTER—  
for children at risk for amyotrophic lateral sclerosis

# Special Showings for Special Needs



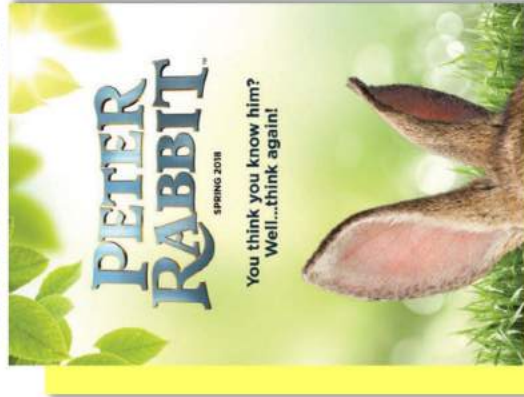
the **PROMISE**  
—RESOURCE CENTER—  
helping families and kids find their way

At the Special Showings, lights are left on, sound is turned down and guests can move around, talk, and laugh out loud without worrying about disturbing others! This is a judgement-free zone for families with young children, children who have special needs and groups looking for a fun, stress-free activity!

**Tuesday, January 16 @10am**  
**Saturday, January 20 @10am**



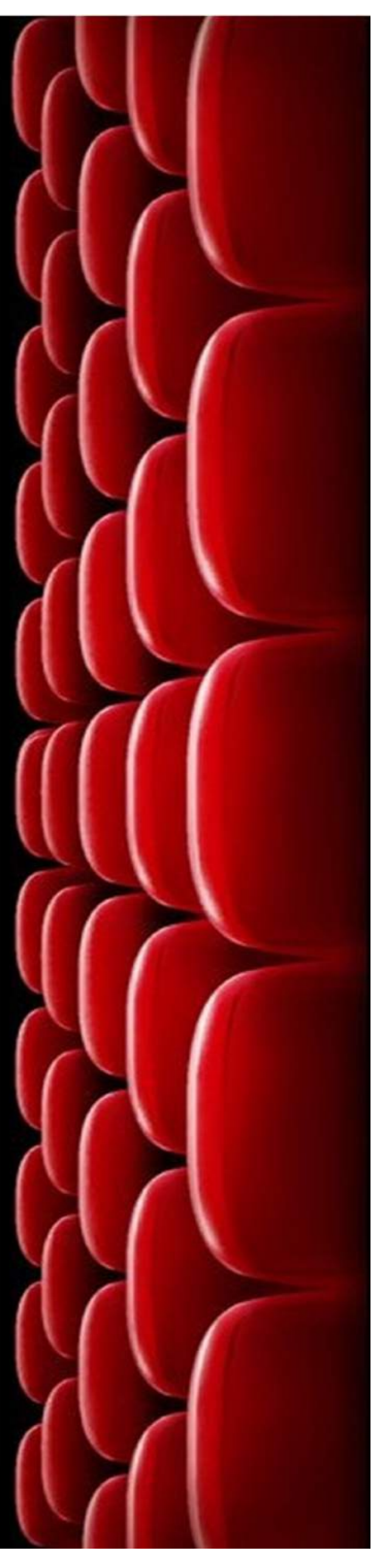
**Tuesday, February 20 @10am**  
**Saturday, February 24 @10am**



**Tuesday, March 20 @10am**  
**Saturday, March 24 @10am**



**Tuesday, April 17 @10am**  
**Saturday, April 21 @10am**



# PROMISE



DON'T FORGET TO TAKE ADVANTAGE OF OUR LOYALTY CARD PROGRAM!

Don't think you'll make it to 5 classes this year? That's okay, loyalty cards are valid for 2 years from the date of membership!

Through this program, members will earn **one free class after attending 5 paid classes.** In addition, members will continue to receive special prices, coupons and discounts to trainings and our Resource Store!

**Become a Member!**

## Membership Application

Please send application form with check or money order to:

***The Promise Resource Center  
29958 Killpeck Creek Court  
Charlotte Hall, MD 20622***

Name \_\_\_\_\_

Membership: \_\_\_\_\_ Renewal \_\_\_\_\_ New

Address \_\_\_\_\_

City \_\_\_\_\_ State \_\_\_\_\_ Zip \_\_\_\_\_

\_\_\_\_\_ \$10 Licensed Provider/Potential Provider/Other

Home Phone \_\_\_\_\_

\_\_\_\_\_ \$25 Group/Center/Director

Email address \_\_\_\_\_

# PROMISE

## Did You Know We Can Bring Our Trainings To Your Center?

**We offer many of our trainings on-site for as few as 6 people!**

### Cost:

**2 Hour Training:  
\$30 per person**

**3 Hour Training:  
\$40 per person**

**Specialty Training  
prices vary.**

**View our training calendar on our website to see some of our main class offerings, or call us for a training tailored specifically to your needs!**

For more information, or to schedule an on-site for your location, contact PRC at (301) 290-0040 or email [register@thepromisecenter.org](mailto:register@thepromisecenter.org)

### Extended Hours

Do you want to reserve our training room for a meeting or workshop!? How about use our die cuts & laminator after work? Remember we will be open for extended hours by appointment only and with advanced notice. All you need to do is call 301-290-0040 to schedule the date and time you want.

*Our regular business hours are  
Monday-Friday from 8:30am-5:00pm*

### Complaint Policy Pertaining to CCRR Service

All of the resource centers of the Maryland Child Care Resource Network strive to provide high-quality service to their constituencies. However, in the event that someone has concerns about an incident regarding some aspect of service at a regional child care resource center or feels that he or she was mistreated by a staff member of a resource center, the caller can contact the resource center involved. If the person is not satisfied with the way the concern or complaint was handled by the regional resource center, he or she can contact the network manager at the Maryland Family Network at 410-752-7588.

# PROMISE

Be sure to look for the New Trainings being offered this month!

## Registration Policy

- **Payment and registration form must be received at the time of registration.** To register for a class: mail check or money order to the Resource Center, drop off payment or call our office to pay with credit card by phone during our regular business hours, Monday-Friday, 8:30am-5:00pm.
- Online registration at our website: [www.thepromisecenter.org](http://www.thepromisecenter.org)
- No Walk-ins permitted. No money will be accepted at the door.
- Due to space limitations, liability issues and the need for a learning environment, **children are not allowed** to attend any workshops. Please make child care arrangements in advance.
- Confirmations will not be mailed. You may call 301-290-0040 to verify your enrollment in the class.
- There is a \$40 service charge for returned checks.
- You must be present and participate in the entire class to receive a certificate for the clock hours listed. **Classes begin at the stated time and no admittance is permitted 15 minutes after the class has started. Late arrivals will not receive certificates, refunds, or transfers for the class.**
- If you have lost or misplaced a certificate, there is a \$5.00 replacement fee.
- Please call 301-290-0040 in advance of class if you need assistance or require special accommodations.
- All classes are open to the public.

## Cancellation Policy

- We do not issue refunds if a student cancels their enrollment in a class. If you need to cancel, **you must call the Promise Resource Center 24-hours in advance** and we will gladly give you a credit for another class. **\* Cancellations must be made 48 hours in advance for CPR and First Aid and Medication Administration** or your payment will be forfeited and no credits will be issued.
- Credit for cancelled classes must be used to attend another class within 60 days of the cancellation or it is forfeited.
- Promise Resource Center reserves the right to cancel a class if, the day prior to the class, we don't have the necessary number of paid participants. You will receive a call notifying you of the cancellation and your money will be refunded or a credit will be issued. Credit must be used to attend another class within 60 days of the cancellation or it is forfeited.
- **Promise Resource Center follows St. Mary's County Public School's inclement weather cancellation schedule. If schools are closed or after-school activities are cancelled due to inclement weather, our office will be closed and the class for that day will be cancelled. For current cancellations, please call 301-290-0040.**

The Promise Resource  
Center

29958 Killpeck Creek Ct.  
Charlotte Hall, MD 20622

(301) 290-0040 or

(866) 290-0040

Visit us on the web at

[www.thepromisecenter.org](http://www.thepromisecenter.org)

## To register for a class:

- ◆ Mail registration form, check, money order, or credit card information to the Promise Center
- ◆ Drop off payment during our regular business hours, Monday-Thursday, 8:30 am-5:00 pm
- ◆ Call our office to pay with a credit card by phone
- ◆ Visit our website and register online with a credit card

*The Promise Resource Center  
provides*

*low-cost workshops for child  
care providers,  
parents and the  
community. Our evening and  
Saturday workshops meet  
MSDE/Office of Child Care  
requirements for Core of  
Knowledge training.*



# LOCATE: Child Care

If you are a licensed child care program or family child care provider, you can take advantage of this free method of advertising by keeping your LOCATE database record current.

- ♦ Report changes to your fees, email, hours, and etc.;
- ♦ Report vacancies.
- ♦ Request a database questionnaire;
- ♦ Leave a question and someone will call you back.

Call toll free **1-866-752-1614** – provider message service.

## LOCATE Complaint Policy

Through the LOCATE service, parents share feedback with the LOCATE staff on the programs in the files: licensed child care centers, registered family child care providers and accredited preschools and camps. While this feedback is at times positive, it sometimes concerns complaints parents have about child caregivers. Of course, LOCATE and the Maryland Child Care Resource Network want to use this information in a way that is fair to providers and parents, while protecting children, as well.

Therefore, the LOCATE Complaint Policy was developed and has been in effect since its approval by the Maryland Committee for Children Board in November, 1983. According to this policy, all complaints made to LOCATE about child care providers/facilities are recorded. The type of complaint is then determined:

**Less Serious Complaint - No Violation:** complaints which do not involve violations of child care regulations; complaints about situations which do not pose a threat to the safety, health or welfare of a child.

**Less Serious Complaint Involving Violation:** complaints of any violation of Office of Child Care (OCC), Maryland State Department of Education (MSDE) regulations, and/or the Health Department which do not pose a threat to the health, safety or welfare of a child.

**Serious Complaint:** any threat to the immediate health, safety, or welfare of a child.

When a parent calls LOCATE with a complaint, the referral specialist advises him/her to register the complaint directly with the appropriate regulatory agency and/or Protective Services. Names and telephone numbers of the person with whom the parent should speak are provided.

When a Serious Complaint is received concerning one of the providers of facilities in the LOCATE system, no referrals are made by the referral specialists to that provider/facility. The LOCATE Director also communicates with the appropriate regulatory agency personnel about the complaint, and maintains the "hold" on the provider/facility until the agency's disposition of the complaint is known. Should the investigation result in no action, the "hold" status is removed from that provider's/facility's records. Should the license or registration be revoked, the record is removed from the LOCATE files. Providers are advised of LOCATE's actions in writing.

A provider may appeal the LOCATE Director's decision to cease referrals. Appeals are first addressed to the LOCATE Advisory Committee. Final appeals may be made to the board of the Maryland Family Network.

It is the position of LOCATE and MFN that the Complaint Policy is both fair and workable. Safeguards and due process are afforded to the care givers in the files, and parents' and children's rights to safety are addressed, as well. Any questions on this policy should be addressed to FloJean Speck, LOCATE: Child Care Director.



**This publication was produced as a work for hire for the benefit of and with funds from the Maryland State Department of Education.**

**The Promise Resource Center is a member agency of the Maryland Childcare Resource Network with funding provided by Maryland Family Network.**

# APRIL 2018

Sunday	Monday	Tuesday	Wednesday	Thursday	Friday	Saturday
1	2	3 Including All Children and the Americans with Disabilities Act 6:00pm-9:00pm Instructor: Sarah Sutherland	4 MD EXCELS: Next Steps 6:30pm-8:30pm Instructor: Thea Quible <i>*Spring '18 Special Eligible*</i>	5 Creating a Classroom Community 6:30pm-8:30pm Instructor: Lauren Signorelli <i>*Spring '18 Special Eligible*</i>	6	7 Parent Handbook 9:30am-11:30am Instructor: Patricia Carruth @Leonardtown Library
8	9	10 Maryland Accreditation 6:30pm-8:30pm Instructor: Sarah Sutherland <i>*Spring '18 Special Eligible*</i>	11 Developmental Delays 6:30pm-8:30pm Instructor: Ashley Beisel <i>*Spring '18 Special Eligible*</i>	12	13	14
15	16 Coloring Outside the Lines 6:30pm-8:30pm Instructor: Lindsay Edwards <i>*Spring '18 Special Eligible*</i>	17	18	19 Infant and Toddler Behavior Management 6:30pm-8:30pm Instructor: Julie Lowthert <i>*Spring '18 Special Eligible*</i>	20	21 CPR & First Aid 9:00am-1:00pm Instructor: Jay Hyde
22	23 Cooking with Kids 6:30pm-8:30pm Instructor: Beth Hancock <i>*Spring '18 Special Eligible*</i>	24 MD EXCELS Workgroup 6:00pm-8:00pm Instructor: Thea Quible <b>Provider Resource Night 6:00pm-8:00pm</b>	25 Science, Technology, Engineering, and Math (STEM) in the Early Childhood Program: Infuse STEM Into Your Program 6:30pm-8:30pm Instructor: Ashley Beisel <i>*Spring '18 Special Eligible*</i>	26	27	28
29	30 Basic Health & Safety Training 6:00pm-9:00pm Instructor: Diane Stearns					

# APRIL 2018

## Training Descriptions:

### 4/3—Including All Children and The Americans with Disabilities Act—OCC Requirement

This training will go over the requirements of the ADA, inclusionary practices in early childhood and school age programs. Also, learn about local, state, and national resources available to child care providers.

*Time: 6:00pm-9:00pm, COK: 3 hours of special needs*  
*Fee: \$30 for members or \$35 for non-members*

### 4/4—Maryland EXCELS: Next Steps

Join us for an informative workshop focused on helping you reach your MD Excels goals!

*Time: 6:30pm-8:30pm, COK: 2 hours of professionalism*  
*Fee: \$15 for members and non-members*

*\*Spring '18 Special Eligible\**

### 4/5—Creating a Classroom Community

This session will demonstrate how to adapt traditional individual activities into cooperative activities that help children develop social competence.

*Time: 6:30pm-8:30pm, COK: 2 hours of community*  
*Fee: \$25 for members or \$30 for non-members*

*\*Spring '18 Special Eligible\**

### 4/7— Parent Handbook @ Leonardtown Library

*FREE Training for St. Mary's County Providers*

This workshop is designed to assist programs in meeting the Maryland EXCELS standard. We will review the components of a parent handbook and contract and work together to either create a new document or revise a current one. You may bring a laptop.

*Time: 9:30am-11:30am, COK: 2 hours of professionalism*

*Fee: Free for St. Mary's County Providers and \$25 for members or \$30 for non-members*

### 4/10—Maryland Accreditation

Learn about the steps and process of receiving Maryland Accreditation. This class is for Center Directors and Assistant Directors.

*Time: 6:30pm-8:30pm, COK: 2 hours of professionalism*

*Fee: \$15 for members and non-members*

*\*Spring '18 Special Eligible\**

### 4/11—Developmental Delays

This class will increase participants' knowledge of developmental delays and increase awareness of strategies to use when caring for children of all abilities in community settings.

*Time: 6:30pm-8:30pm, COK: 2 hours of special needs*

*Fee: \$25 for members or \$30 for non-members*

*\*Spring '18 Special Eligible\**

### 4/16—Coloring Outside the Lines

The Purpose of ART is to feel, discover, imagine and create. Participants will learn how to meet the NAFCC accreditation standards regarding developmentally appropriate art materials. Strategies will be discussed regarding overcoming challenges, planning activities, and implementation of developmentally appropriate art activities for children.

*Time: 6:30pm-8:30pm, COK: 2 hours of curriculum*

*Fee: \$25 for members or \$30 for non-members*

*\*Spring '18 Special Eligible\**

### 4/19—Infant and Toddler Behavior Management

In this course, we will discuss infant and toddler development and the difference between misbehavior and a child communicating their needs.

*Time: 6:30pm-8:30pm, COK: 2 hours of child development*

*Fee: \$25 for members or \$30 for non-members*

*\*Spring '18 Special Eligible\**

### 4/21—CPR & First Aid—OCC Requirement

Participants will be trained in CPR for the infant, child and adult. This class meets the Maryland Child Care Administration's requirements for child care facilities.

*Time: 9:00am-1:00pm*

*Fee: \$75 for members and non-members*

### 4/23—Cooking with Kids

Kids are capable of much more than we sometimes think! If you would like to introduce cooking to kids in your care, join us for Cooking with Kids!

*Time: 6:30pm-8:30pm, COK: 2 hours of curriculum*

*Fee: \$25 for members or \$30 for non-members*

*\*Spring '18 Special Eligible\**

### 4/24—Maryland EXCELS Workgroup

This is a free workgroup for providers seeking support with Maryland EXCELS registration and application, publishing at a quality check level rating (1-5), creating or revising documentation to meet Maryland EXCELS criteria, technology support or general question and answer time. No core of knowledge will be earned for this workgroup

*Time: 6:00pm-8:00pm*

*Fee: Free*

### 4/25—Science, Technology, Engineering, and Math (STEM) in the Early Childhood Program: Infuse STEM Into Your Program

Participants will learn how to support STEM learning by creating environments that provide opportunities for children to explore, create, and question during play. Participants will identify developmentally appropriate STEM learning activities as well as discover ways to use materials already available in their programs.

*Time: 6:30pm-8:30pm, COK: 2 hours or curriculum*

*Fee: \$25 for members or \$30 for non-members*

*\*Spring '18 Special Eligible\**

### 4/30—Basic Health & Safety Training—OCC Requirement

This workshop will satisfy the pending regulation requiring all child care providers, including all center staff and family providers, to complete this workshop. This workshop was developed in partnership with the National Center for Early Childhood Health and Wellness, Child Care Aware of America, the American Academy of Pediatrics, and Maryland Family Network, with support from the Maryland State Child Care Association.

*Time: 6:00pm-9:00pm, COK: 3 hours of health, safety, and nutrition*

*Fee: \$30 for members or \$35 for non-members*

## Spring of '18 Special

REGISTER FOR 2 COK TRAININGS\* IN MARCH, APRIL, OR MAY AND RECEIVE

## 18% OFF

YOUR SPRING CONFERENCE REGISTRATION!

\*18% off discount must be used at the time of registration for the conference. Both classes must be completed by May 31. Does not include series trainings, CPR & First Aid, Medication Administration, Basic Health & Safety, Breastfeeding, SIDS, or ADA. The discount cannot be transferred. No cash value. Conference space is limited and cannot be guaranteed.\*

### Conference Info: PRC's Spring Conference

**"Take a Hand, Touch a Heart"**

**June 2 @ Lexington Park Library**

**9:00am-4:45pm**

**\$50 for members or \$55 for non-members**

### Membership:

*Interested in becoming a member of The Promise Resource Center and receiving discounts on many of the classes you see here?*

*For only \$10 a year, individual membership will earn you :*

- 1 PAU
- \$5 off select trainings
- 1 free training for every 5 trainings completed
- Satisfaction in knowing you are helping families in our community receive services for low or no cost!

*Visit [thepromisecenter.org/register](http://thepromisecenter.org/register) or call 301-290-0040 to register for membership today!*

# MAY 2018

Sunday	Monday	Tuesday	Wednesday	Thursday	Friday	Saturday
		1	2	3 Multiple Intelligences: Discovering Gifts and Empowering Children 6:30pm-8:30pm Instructor: Ashley Beisel  *Spring '18 Special Eligible*	4	5 Medication Administration 9:00am-4:00pm Instructor: Pat Jennings
6	7	8	9	10 Infant and Toddler STEM 6:30pm-8:30pm Instructor: Diane Stearns  <b>New Training!!</b>  *Spring '18 Special Eligible*	11	12
13	14 Fit From the Start 6:00pm-9:00pm Instructor: Lindsay Edwards  *Spring '18 Special Eligible*	15	16	17 Including All Children and the Americans with Disabilities Act 6:00pm-9:00pm Instructor: Julie Lowthert	18	19 CPR & First Aid 9:00am-1:00pm Instructor: Jay Hyde
20	21	22 Maryland EXCELS Workgroup 6:30pm-8:30pm	23 The Tremendous Two's 6:30pm-8:30pm  *Spring '18 Special Eligible*	24	25	26
27	28	29	30 Little Boy Blues 6:00pm-9:00pm Instructor: Patricia Carruth  *Spring '18 Special Eligible*	31		

# MAY 2018

## Training Descriptions:

### 5/3—Multiple Intelligences: Discovering Gifts and Empowering Children

Every child learns in a different way. Some children are auditory learners (learn best by listening), some visual (learn best by seeing), and some learn by doing. This workshop will discuss ways to promote learning environments that meet the needs of all children.

*Time: 6:30pm-8:30pm, COK: 1 hour of curriculum and 1 hour of special needs*

*Fee: \$25 for members or \$30 for non-members*

*\*Spring '18 Special Eligible\**

### 5/5—Medication Administration—OCC Requirement

This training course is a 6-hour competency-based class approved by MSDE/OCC to train child care providers to safely administer oral, topical and emergency medication to children in a child care setting. Upon successful completion of this course each participant will receive a certificate of completion which will allow the participant to administer MSDE/OCC approved medications to infants, toddlers, preschool and school aged children in child care centers and homes. You must pass a pre and post test. You may bring lunch or go to a fast-food restaurant in the area.

*Time: 9:00am-4:00pm, COK: 6 hours of health, safety, and nutrition*

*Fee: \$65 for members and non-members*

### 5/10—Infant and Toddler STEM **\*NEW TRAINING\***

This training is full of fun and educational hands on science, technology, engineering, and math activities designed especially for children birth to eighteen months.

*Time: 6:30pm-8:30pm, COK: 2 hours of curriculum*

*Fee: \$25 for members or \$30 for non-members*

*\*Spring '18 Special Eligible\**

### 5/14—Fit from the Start

Learn about healthy meal and snack options and how to keep children healthy and fit.

*Time: 6:00pm-9:00pm, COK: 1.5 hours of curriculum and 1.5 hours of special needs*

*Fee: \$30 for members or \$35 for non-members*

*\*Spring '18 Special Eligible\**

### 5/17—Including All Children and The Americans with Disabilities Act—OCC Requirement

This training will go over the requirements of the ADA, inclusionary practices in early childhood and school age programs. Also, learn about local, state, and national resources available to child care providers.

*Time: 6:00pm-9:00pm, COK: 3 hours of special needs*

*Fee: \$30 for members or \$35 for non-members*

### 5/19—CPR & First Aid—OCC Requirement

Participants will be trained in CPR for the infant, child and adult. This class meets the Maryland Child Care Administration's requirements for child care facilities.

*Time: 9:00am-1:00pm*

*Fee: \$75 for members and non-members*

### 5/22—Maryland EXCELS Workgroup

This is a free workgroup for providers seeking support with Maryland EXCELS registration and application, publishing at a quality check level rating (1-5), creating or revising documentation to meet Maryland EXCELS criteria, technology support or general question and answer time. No core of knowledge will be earned for this workgroup

*Time: 6:30pm-8:30pm*

*Fee: Free*

### 5/23—The Tremendous Two's

We will discuss how to turn the 'terrible two's' into "Tremendous Two's" by looking at environmental factors, behavior modification and age appropriate activities.

*Time: 6:30pm-8:30pm, COK: 2 hours or child development*

*Fee: \$25 for members or \$30 for non-members*

*\*Spring '18 Special Eligible\**

### 5/30—Little Boy Blues

This training reviews current research on gender differences in the development of boys and girls, cultural expectations and the impact of the academic focus on preschool and child care programs.

*Time: 6:00pm-9:00pm, COK: 1 hour of curriculum and 2 hours of child development*

*Fee: \$30 for members or \$35 for non-members*

*\*Spring '18 Special Eligible\**

## Spring of '18 Special

REGISTER FOR 2 COK TRAININGS\* IN MARCH, APRIL, OR MAY AND RECEIVE

18% OFF

YOUR SPRING CONFERENCE REGISTRATION!

\*18% off discount must be used at the time of registration for the conference. Both classes must be completed by May 31. Does not include series trainings, CPR & First Aid, Medication Administration, Basic Health & Safety, Breastfeeding, SIDS, or ADA. The discount cannot be transferred. No cash value. Conference space is limited and cannot be guaranteed.\*

### Conference Info: PRC's Spring Conference

"Take a Hand, Touch a Heart"

June 2 @ Lexington Park Library

9:00am-4:45pm

\$50 for members, \$55 for non-members

### Membership:

Interested in becoming a member of The Promise Resource Center and receiving discounts on many of the classes you see here?

For only \$10 a year, individual membership will earn you :

- 1 PAU
- \$5 off select trainings
- 1 free training for every 5 trainings completed
- Satisfaction in knowing you are helping families in our community receive services for low or no cost!

Visit [thepromisecenter.org/register](http://thepromisecenter.org/register) or call 301-290-0040 to register for membership today!