

IN THIS ISSUE WE WILL
TALK ABOUT:

- Training Opportunities
- PRC Staff Accomplishments
- Job Opportunities at PRC
- Family Support Center of Southern Maryland



STAFF SPIRIT DAYS!

September 24, 2021 - Guess Who Day!



MEMBER SPOTLIGHT

Welcome to our new and returning members!

- Audrey Alvey
- Tracey Proctor
- Harriet Dyson



OCTOBER TRAINING OPPORTUNITIES

Encouraging Imaginative Play

Webinar

October 4, 2021 | 6:00pm-9:00pm

Webinar | COK: 3 hours of Curriculum

\$30 for members or \$35 for non-members

This training is designed to help participants understand the importance of imaginative play in children's development and how providing recycled and open-ended materials opens the doors of imagination and promotes executive function and higher level thinking skills in young children. Through small and large group activities and discussions, participants will identify relevant, responsive, and reflective strategies to spark creativity in the young child's environment.

Parent Involvement + Family Engagement = Success

Webinar

October 7, 2021 | 6:30pm-8:30pm

Webinar | COK: 2 hours of Professionalism

\$25 for members or \$30 for non-members

Understanding the importance of building strong partnerships with families is essential to providing quality child care. Relationships built on trust and respect are the cornerstone that allow children and adults to thrive in a caring community. In this workshop, you will identify parent involvement and family engagement practices and the benefits for the child, family and provider/teacher.

So What are PAUs and How Do I Get Them?

Webinar

October 13, 2021 | 6:30pm-8:30pm

Webinar | COK: 2 hours of Community

\$25 for members or \$30 for non-members

Participation in activities that contribute to the professional growth and career development are important to maintain a high level of professionalism. In this workshop, we will take a look at professional activities and how they can be applied to the MD Child Care Credentialing program.

Medication Administration

@ HYBRID Webinar and The Promise Resource Center

October 21&23, 2021 | 6:00pm-10:00pm & 9:00am-11:00am

Instructor: Patricia Jennings

Hybrid Learning | OCC Requirement

\$75 for members and non-members

This training course is a 6-hour competency-based class approved by MSDE/OCC to train child care providers to safely administer oral, topical and emergency medication to children in a child care setting. Upon successful completion of this course each participant will receive a certificate of completion which will allow the participant to administer MSDE/OCC approved medications to infants, toddlers, and preschoolers.

SIDS, SUID, and Other Sleep Related Infant Deaths

Webinar

October 27, 2021 | 6:30pm-8:30pm

Webinar | COK: 2 hours of Health, Safety, and Nutrition

\$25 for members or \$30 for non-members

As infant and toddler caregivers, it is important to understand SIDS and sleep-related deaths, including the many strategies which can be implemented to reduce the risk of sleep-related death. Participants will review what is SIDS and sleep-related death, review recent research and statistics, gain greater understanding of the role child care plays in keeping infants safe, and the recommendations and strategies for keeping children safe.

CPR and First Aid

@ The Promise Resource Center

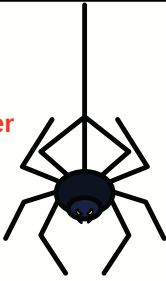
October 30, 2021 | 9:00am-3:00pm

Instructor: Steve Mandragos

In-Person Learning | OCC Requirement

\$85 for members and non-members

Participants will be trained in CPR for the infant, child and adult. This class meets the Maryland Child Care Administration's requirements for child care facilities.



Location of class indicated by RED text.

We have several class options available at this time. Please be aware that each training opportunity has the location indicated in red under each class name.

IN-PERSON LEARNING COVID-19 REQUIREMENTS AND PROCEDURES:

Effective August 2, 2021 -- All people attending trainings or meetings at PRC must wear masks inside the building for the duration of the visit. If you do not have a mask with you, please see our check-in desk where a mask will be provided to you. Sanitizer stations continue to be provided in the lobby and training reception area outside of the training room. All provided items such as pens, table tops, and chairs also continue to be sanitized prior to participant arrival.

JOB POSTINGS

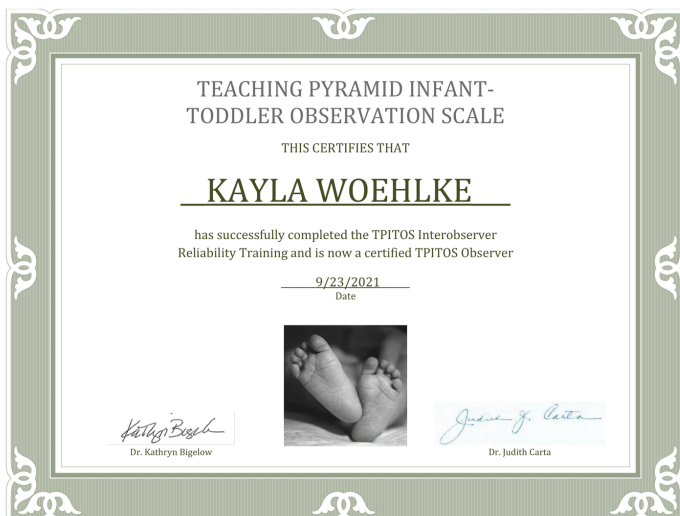


We're hiring **Infant and Toddler Program Coach, Child Development Specialist, Child Development Assistant, and Infant and Early Childhood Mental Health Consultant.**

If you are interested in working at The Promise Resource Center, visit our website or Indeed for all opportunities and their full descriptions. Applications can be submitted through Indeed or by emailing a copy of your cover letter and resume to employment@thepromisecenter.org.

Visit thepromisecenter.org/employmentopportunities for a current list of available positions or search for the agency on [Indeed.com](https://www.indeed.com).

STAFF ACCOMPLISHMENTS



Kayla Woehlke, our Early Childhood Mental Health Consultant, has completed the *Teaching Pyramid Infant-Toddler Observation Scale* (TPITOS) training! TPITOS is modeled after the Teaching Pyramid Observation Tool (TPOT™) for Preschool Classrooms. TPITOS is for early childhood center-based programs caring for infants and toddlers. Focusing on teacher practices and classroom environment variables, TPITOS measures how well your program's staff is fostering responsive, nurturing relationships with children and promoting strong social-emotional development in their earliest years.

Congratulations Kayla!



Family SUPPORT CENTER

of Southern Maryland

Opening
Soon!

The Family Support Center of Southern Maryland is a community-based program open to all expectant parents and parents of children ages birth through three living in Calvert, Charles, and St. Mary's Counties.

Services include:

- Infant and Toddler Programs
- Parenting Education
- Onsite GED/ESL classes
- Financial Literacy Classes
- Workforce Development
- Service Coordination
- Health Education
- In-Home Intervention
- And much more!

Committed to the Strengthening Families approach and to building the five Protective Factors that all families need:

- Parental Resilience
- Social Connections
- Concrete Support in Times of Need
- Knowledge of Parenting and Child Development
- Social & Emotional Competence of Children



MARYLAND
FAMILY
NETWORK

Leading Maryland's
Child Care Resource Centers

MARYLAND CHILD CARE RESOURCE NETWORK COMPLAINT POLICY

Every member agency of the Maryland Child Care Resource Network strives to provide high quality service to the child care programs and families in their jurisdiction and throughout Maryland. It is our mission to ensure that every interaction with staff at the Child Care Resource Centers is positive and professional.

If you have concerns about an incident or some aspect of service at a Child Care Resource Center, please contact the director/manager directly. Contact information for these individuals can be found here (<https://marylandfamilynetwork.org/for-providers/findyour-child-care-resource-center>). If you are not satisfied with the way your concern is handled by the director/manager at the Child Care Resource Center, please contact Maryland Family Network at 410-659-7701 or at MCCRNinfo@marylandfamilynetwork.org. As the Statewide Coordinating Entity of the Maryland Child Care Resource Network, MFN will investigate the complaint or concern regarding services and take appropriate action.

BECOME A PRC MEMBER TODAY!

Interested in becoming a member of The Promise Resource Center and receiving discounts on many of our classes?

For only \$10 a year, individual membership will earn you :

1 PAU

\$5 off select trainings

1 free training for every 5 trainings completed

Satisfaction in knowing you are helping families in our community receive services for low or no cost!

Membership is also available for centers. These memberships are \$25 a year. Center staff will receive \$5 off select trainings if the training is paid for by the center.

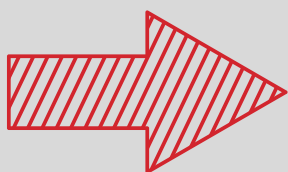
Visit thepromisecenter.org/register or call 301-290-0040 to register for membership today!



Become a member today!

Complete and mail this form + payment to:

The Promise Resource Center
8395 Old Leonardtown Rd.
Hughesville, MD 20637



Membership Application

Name: _____

Address: _____

City: _____ Zip: _____

Phone: _____

Email: _____

Membership Type

Renewal _____ New _____

Center/Group _____ Individual _____

REGISTRATION POLICY

Here at PRC, we have a passion for education and are excited to have you join us in the pursuit of knowledge!

We are now offering webinars to our clients. Webinars will be announced on our training calendar and posted on our website.

Payment can be made in-person using cash, checks, money orders, or credit cards. You may call with a credit card to pay over the phone. Payment for a class will also be accepted online at thepromisecenter.org/register. Please note that classes must be paid for in advance, so please pay promptly to secure your spot.

Confirmations will be emailed at the time of registration. Please call 301-290-0040 to verify your enrollment in a class.

You must be present and participate in the entire class to receive a certificate for the clock hours listed. Classes begin at the stated time and no admittance is permitted 15 minutes after the class has started. Late arrivals will not receive certificates, refunds, or transfers for the class.

For our webinars, class participation is required. You must have video and microphone capabilities. Participation in chats, class discussion and polls are required to receive your certificate. We ask that you eliminate as many distractions as possible when attending the class. Certificates will be mailed upon completion of the assessment.

Certificates will be issued by email for webinar trainings. If you need a replacement certificate, please email info@thepromisecenter.org or call 301-290-0040.

Please call 301-290-0040 in advance of class if you need assistance or require special accommodations.

All classes are open to the public.

The Promise Resource Center provides low-cost workshops for child care providers, parents and the community. Our workshops meet MSDE/Office of Child Care requirements for Core of Knowledge training.



CANCELLATION POLICY

We do not issue refunds if a student cancels their enrollment in a class. If you need to cancel, you must call the Promise Resource Center **24-hours in advance** and we will gladly give you a credit for another class. ***Cancellations must be made 48 hours in advance for CPR and First Aid and Medication Administration** or your payment will be forfeited and no credits will be issued. Our cancellation policy includes webinar registration.

Credit for cancelled classes must be used to attend another class within 60 days of the cancellation or it is forfeited.

The Promise Resource Center reserves the right to cancel a class if, the day prior to the class, we don't have the necessary number of paid participants.

You will receive a call notifying you of the cancellation and your money will be refunded or a credit will be issued. Credit must be used to attend another class within 60 days of the cancellation or it is forfeited.

LOCATE: CHILD CARE



LOCATE: Child Care

Every day, parents contact LOCATE: Child Care. Parents need comprehensive information to help them make informed decisions for their child. The more complete and current your information is, the better we can help parents find and choose your program. Please review and update your provider record today. You can update your record now at <https://locate.marylandfamilynetwork.org/Provider/login>. Once you enter your information, it will be reviewed and activated in our database within just two business days.

Update your record now
at <https://locate.marylandfamilynetwork.org/Provider/login>

LOCATE Complaint Policy

Through the LOCATE service, parents share feedback with the LOCATE staff on the programs in the files: licensed child care centers, registered family child care providers and accredited preschools and camps. While this feedback is at times positive, it sometimes concerns complaints parents have about child caregivers. Of course, LOCATE and the Maryland Child Care Resource Network want to use this information in a way that is fair to providers and parents, while protecting children, as well.

Therefore, the LOCATE Complaint Policy was developed and has been in effect since its approval by the Maryland Committee for Children Board in November, 1983. According to this policy, all complaints made to LOCATE about child care providers/facilities are recorded. The type of complaint is then determined:

Less Serious Complaint - No Violation: complaints which do not involve violations of child care regulations; complaints about situations which do not pose a threat to the safety, health or welfare of a child.

Less Serious Complaint Involving Violation: complaints of any violation of Office of Child Care (OCC), Maryland State Department of Education (MSDE) regulations, and/or the Health Department which do not pose a threat to the health, safety or welfare of a child.

Serious Complaint: any threat to the immediate health, safety, or welfare of a child.

When a parent calls LOCATE with a complaint, the referral specialist advises him/her to register the complaint directly with the appropriate regulatory agency and/or Protective Services. Names and telephone numbers of the person with whom the parent should speak are provided.

When a Serious Complaint is received concerning one of the providers of facilities in the LOCATE system, no referrals are made by the referral specialists to that provider/facility. The LOCATE Director also communicates with the appropriate regulatory agency personnel about the complaint, and maintains the "hold" on the provider/facility until the agency's disposition of the complaint is known. Should the investigation result in no action, the "hold" status is removed from that provider's/facility's records. Should the license or registration be revoked, the record is removed from the LOCATE files. Providers are advised of LOCATE's actions in writing.

A provider may appeal the LOCATE Director's decision to cease referrals. Appeals are first addressed to the LOCATE Advisory Committee. Final appeals may be made to the board of the Maryland Family Network.

It is the position of LOCATE and MFN that the Complaint Policy is both fair and workable. Safeguards and due process are afforded to the care givers in the files, and parents' and children's rights to safety are addressed, as well. Any questions on this policy should be addressed to FloJean Speck, LOCATE: Child Care Director.



MARYLAND
FAMILY
NETWORK
*Leading Maryland's
Child Care Resource Centers*



MARYLAND CHILD CARE
RESOURCE NETWORK

The Promise Resource Center is a member of the Maryland Child Care Resource Network with funding provided from the Maryland State Department of Education, through Maryland Family Network.

TRAINING

	01	02
03		
04	05 Encouraging Imaginative Play 6:00pm-9:00pm WEBINAR \$30/\$35	06 07 Parent Involvement + Family Engagement = Success 6:30pm-8:3:00pm WEBINAR \$25/\$30
09		
10	11 12 13 What are PAUs and How Do I Get Them 6:30pm-8:3:00pm WEBINAR \$25/\$30	14 15 16
17	18 19 20 21 Medication Administration 6:00pm-10:00pm Instructor: Patricia Jennings WEBINAR \$75	22 23 CONTINUED Medication Administration 9:00am-11:00am Instructor: Patricia Jennings @ The Promise Resource Center
24	25 26 27 SIDS, SUID and Other Sleep Related Infant Deaths 6:30pm-8:3:00pm WEBINAR \$25/\$30	28 29 30 CPR and First Aid 9:00am-3:00pm Instructor: Steve Mandragos @ The Promise Resource Center \$85
31		

OCTOBER

Encouraging Imaginative Play

Webinar

October 4, 2021 | 6:00pm-9:00pm

Webinar | COK: 3 hours of Curriculum

\$30 for members or \$35 for non-members

This training is designed to help participants understand the importance of imaginative play in children's development and how providing recycled and open-ended materials opens the doors of imagination and promotes executive function and higher level thinking skills in young children. Through small and large group activities and discussions participants will identify relevant, responsive, and reflective strategies to spark creativity in the young child's environment.

Parent Involvement + Family Engagement = Success

Webinar

October 7, 2021 | 6:30pm-8:30pm

Webinar | COK: 2 hours of Professionalism

\$25 for members or \$30 for non-members

Understanding the importance of building strong partnerships with families is essential to providing quality child care. Relationships built on trust and respect are the cornerstone that allow children and adults to thrive in a caring community. In this workshop you will identify parent involvement and family engagement practices and the benefits for the child, family and provider/teacher.

So What are PAUs and How Do I Get Them?

Webinar

October 13, 2021 | 6:30pm-8:30pm

Webinar | COK: 2 hours of Community

\$25 for members or \$30 for non-members

Participation in activities that contribute to the professional growth and career development are important to maintain a high level of professionalism. In this workshop we will take a look at professional activities and how they can be applied to the MD Child Care Credentialing program.

Medication Administration

@ HYBRID Webinar and The Promise Resource Center

October 21&23, 2021 | 6:00pm-10:00pm & 9:00am-11:00am

Instructor: Patricia Jennings

Hybrid Learning | OCC Requirement

\$75 for members and non-members

This training course is a 6-hour competency-based class approved by MSDE/OCC to train child care providers to safely administer oral, topical and emergency medication to children in a child care setting. Upon successful completion of this course each participant will receive a certificate of completion which will allow the participant to administer MSDE/OCC approved medications to infants, toddlers, and preschoolers.

SIDS, SUID, and Other Sleep Related Infant Deaths

Webinar

October 27, 2021 | 6:30pm-8:30pm

Webinar | COK: 2 hours of Health, Safety, and Nutrition

\$25 for members or \$30 for non-members

As infant and toddler caregivers, it is important to understand SIDS and sleep-related deaths, including the many strategies which can be implemented to reduce the risk of sleep-related death. Participants will review what is SIDS and sleep-related death, review recent research and statistics, gain greater understanding of the role child care plays in keeping infants safe, and the recommendations and strategies for keeping children safe.

CPR and First Aid

@ The Promise Resource Center

October 30, 2021 | 9:00am-3:00pm

Instructor: Steve Mandragos

In-Person Learning | OCC Requirement

\$85 for members and non-members

Participants will be trained in CPR for the infant, child and adult. This class meets the Maryland Child Care Administration's requirements for child care facilities.

****Please pack a "brown bag" lunch to bring with you to class. Class size is limited and will be filled on a first come, first serve basis.****

TRAINING

TRAINING

SUN	MON	TUE	WED	THU	FRI	SAT
	01	02	03 Including All Children and The Americans with Disabilities Act 6:00pm-9:00pm Instructor: Sarah Sutherland WEBINAR \$30/\$35	04 CPR and First Aid 9:00am-3:00pm Instructor: Steve Mandragos @ The Promise Resource Center \$85	05	06
07	08 Developmentally Appropriate Supervision 6:00pm-9:00pm Instructor: Sarah Sutherland WEBINAR \$30/\$35	09	10	11 PRC Closed Veterans Day	12	13
14	15 Recognizing and Responding to Challenging Behaviors 6:00pm-8:00pm Instructor: Sarah Sutherland WEBINAR \$25/\$30	16	17	18	19	20
21	22	23	24	25 PRC Closed Thanksgiving Break	26 PRC Closed Thanksgiving Break	27
28	29	30				

NOVEMBER

NOVEMBER

Including All Children and The Americans with Disabilities Act

Webinar

November 3, 2021 | 6:00pm-9:00pm

Instructor: Sarah Sutherland

Webinar | COK: 3 hours of Special Needs

\$30 for members or \$35 for non-members

This training will go over the requirement of the ADA and inclusionary practices in early childhood and school age programs. Also, learn about local, state and national resources available to child care providers.

Recognizing and Responding to Challenging Behaviors

Webinar

November 15, 2021 | 6:00pm-8:00pm

Instructor: Sarah Sutherland

Webinar | COK: 2 hours of Child Development

\$25 for members or \$30 for non-members

This workshop reviews the importance of recognizing challenging behaviors. Participants will learn what challenging behaviors look like, how to identify them, and what they can do to help. Participants will also learn how to create written observations of behaviors to identify patterns and implement strategies to prevent challenging behaviors from occurring.

CPR and First Aid

@ The Promise Resource Center

November 6, 2021 | 9:00am-3:00pm

Instructor: Steve Mandragos

In-Person Learning | OCC Requirement

\$85 for members and non-members

Participants will be trained in CPR for the infant, child and adult. This class meets the Maryland Child Care Administration's requirements for child care facilities.

****Please pack a "brown bag" lunch to bring with you to class. Class size is limited and will be filled on a first come, first serve basis.****

Developmentally Appropriate Supervision

Webinar

November 8, 2021 | 6:00pm-9:00pm

Instructor: Sarah Sutherland

Webinar | COK: 3 hours of Child Development

\$30 for members or \$35 for non-members

Gain greater understanding of how to appropriately and effectively supervise children of all ages. Explore techniques for indoor and outdoor supervision. Ensure children's safety through active monitoring to enable children to maximize their learning opportunities. This workshop can be used for licensing compliance requests.

TRAINING

DECEMBER

TRAINING

SUN	MON	TUE	WED	THU	FRI	SAT
			01 How to Develop Critical Thinking Skills in Children 6:00pm-9:00pm Instructor: Sarah Sutherland WEBINAR \$30/\$35	02 Medication Administration 6:00pm-10:00pm Instructor: Pat Jennings WEBINAR \$75	03	04 CONTINUED Medication Administration 9:00am-11:00am Instructor: Pat Jennings @ The Promise Resource Center
05	06 Basic Health and Safety with Supporting Breast Feeding in Child Care 6:00pm-9:00pm Instructor: Sarah Sutherland WEBINAR \$30/\$35	07	08 Math and Science Board Books for Babies 6:00pm-8:00pm Instructor: Sarah Sutherland WEBINAR \$25/\$30	09	10	11 Emergency and Disaster Preparedness 9:00am-4:00pm Instructor: Sarah Sutherland @ The Promise Resource Center
12	13 A Sense of Place: Human Geography in the Early Childhood Classroom Instructor: Sarah Sutherland 6:00pm-8:00pm WEBINAR \$30/\$35	14	15	16	17	18
19	20	21	22	23	24 PRC Closed Winter Break	25
26	27 PRC Closed Winter Break	28 PRC Closed Winter Break	29 PRC Closed Winter Break	30 PRC Closed Winter Break	31 PRC Closed Winter Break	

DECEMBER

How to Develop Critical Thinking Skills in Children

Webinar

December 1, 2021 | 6:00pm-9:00pm

Instructor: Sarah Sutherland

Webinar | COK: 1.5 hours of Child Development and 1.5 hours of Curriculum

\$30 for members or \$35 for non-members

In this workshop, participants will learn about early brain development and why the most important time to develop critical thinking skills is in preschool. Participants will learn what early childhood educators and care providers need to do to help students flourish academically.

Math and Science Board Books for Babies

Webinar

December 8, 2021 | 6:00pm-8:00pm

Instructor: Sarah Sutherland

Webinar | COK: 2 hours of Curriculum

\$25 for members or \$30 for non-members

Infants and toddlers are naturally curious about the world around them. They can begin to develop an understanding of pre-math and pre-science skills with the help of board books.

Medications Administration

Hybrid Training

December 2 & 4, 2021 | 6:00pm-10:00pm and 9:00am-11:00am

Instructor: Pat Jennings

Hybrid Training | OCC Requirement

\$75 for members and non-members

This training course is a 6-hour competency-based class approved by MSDE/OCC to train child care providers to safely administer oral, topical and emergency medication to children in a child care setting. Upon successful completion of this course each participant will receive a certificate of completion which will allow the participant to administer MSDE/OCC approved medications to infants, toddlers, and preschoolers.

Emergency and Disaster Preparedness

@ The Promise Resource Center

December 11, 2021 | 9:00am-3:00pm

Instructor: Sarah Sutherland

In-Person Learning | COK: 3 hours of Health, Safety and Nutrition and 3 hours of Professionalism

\$50 for members and non-members

This six hour workshop meets the OCC requirements for Emergency Preparedness training. Participants will complete an approved emergency preparedness plan in the workshop.

Basic Health and Safety with Supporting Breast Feeding in Child Care

Webinar

December 6, 2021 | 6:00pm-9:00pm

Instructor: Sarah Sutherland

Webinar | COK: 3 hours of Health, Safety and Nutrition

\$30 for members or \$35 for non-members

This training will satisfy the CCDF Health and Safety Requirements. This training is highly interactive and informative.

Satisfies the Supporting Breastfeeding in Child Care training. This is a required course for all directors, infant and toddler staff, and family providers.

A Sense of Place: Human Geography in the Early Childhood Classroom

Webinar

December 13, 2021 | 6:00pm-8:00pm

Instructor: Sarah Sutherland

Webinar | COK: 2 hours of Curriculum

\$25 for members or \$30 for non-members

Developing a sense of place through geographic experiences helps build the social and emotional foundation children need and will one day use as adults.

TRAINING